

President's Award

Hazard Control Safety Award Program 2021



an **nsc** chapter

Central Iowa Power Cooperative (CIPCO) – Cedar Rapids, IA

Job Briefing (Tailgate) Form Improvement

- CIPCO's job briefing form needed to be improved upon in order to provide the best information for employees and to encourage participation in the job briefing itself.
- The form was made form-fillable, available on the company Intranet, and now incorporates a checklist style to help employees think about potential hazards inherent in any project. A link to the Iowa Department of Public Health's trauma facilities map is also part of the form so that anyone doing field work will know exactly where the nearest emergency care facility is located no matter where employee project work is taking place.

Before Photo

CIPCO Fair Station
Pre-job Safety Session

Group: Operations Date: Monday, April 29, 2013

Safety Topic: Operation Safety

Summary of Presentation:

1. Wear PPE as required on all jobs.
2. Communication is priority to ensure safe working environment.
3. If you spot an unlabeled container, label it or turn it in.
4. Prevent slips and falls by cleaning up oil spills.
- 5.
- 6.
- 7.
8. Use caution opening valves, use valve wrenches.
- 9.
- 10.

Contractors on site: O.E. Betz

Action to be taken:

Supervisor: B. H. Supervisor Remarks:

Presented by:

Superintendent's remarks:

by: Date: 03 May 2013

After Photo

JOB BRIEFING - CENTRAL IOWA POWER COOPERATIVE

Date	Time	Person In Charge	Switch Order
------	------	------------------	--------------

The following is a minimum checklist of points to be discussed prior to starting a job:

Work Location/Address:

Feeder/Circuit Number(s) Being Worked On:

Brief Job Description:

Emergency Contact Information: 911 - Nearest Hospital: LOCATE NEAREST FACILITY HERE: <https://www.idph.iowa.gov/BETS/trauma/facilities-map>

Type of Work to be Performed - Check all that Apply

<input type="checkbox"/> Antenna Install	<input type="checkbox"/> Overhead Electrical Primary	<input type="checkbox"/> Tree Trimming
<input type="checkbox"/> Enclosed/Confined Space	<input type="checkbox"/> Overhead Electrical Secondary	<input type="checkbox"/> Underground Electrical
<input type="checkbox"/> Energized Conductors	<input type="checkbox"/> Pole Setting	<input type="checkbox"/> Underground Fault Locating
<input type="checkbox"/> Line Work	<input type="checkbox"/> Relay Replacement	<input type="checkbox"/> Other:
<input type="checkbox"/> Metering Work	<input type="checkbox"/> Substation Work	

Notes:



JOHN DEERE DES MOINES WORKS – ANKENY, IA

Early Intervention Program



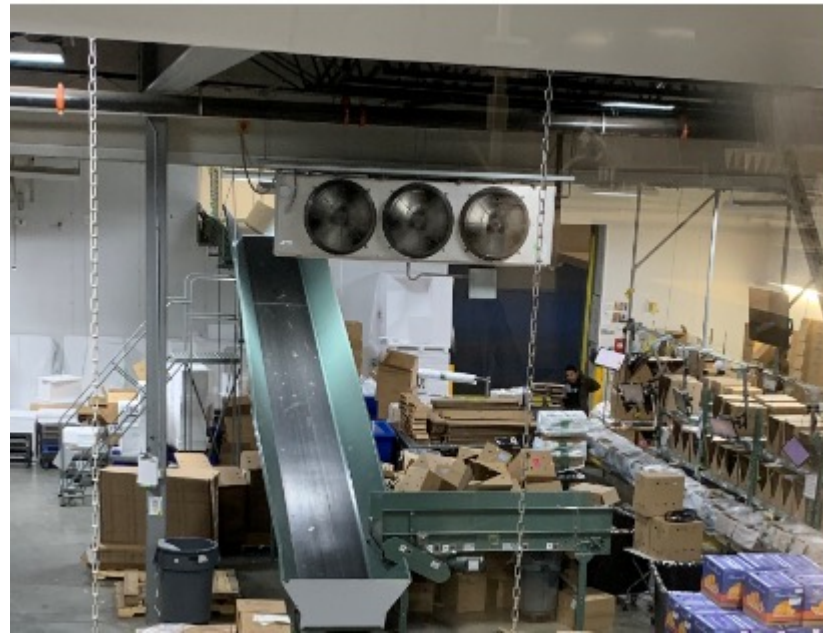
Before: For FY14-FY18 sprains & strains were 55.1% of our OSHA recordable injuries and 22.8% of reported sprains and strains would eventually go recordable. Treatment of complaints starts after report of injury and involved non-conservative care modalities.

After: Implementation of an Early Intervention program focused on MSD complaint recognition early with conservative care, proactive engagement with employees, preventative stretching programs, work conditioning for new hires, work center review and first report of injury to early intervention specialist. Resulting in: Sprain strains now are only 30.4% of our OSHA recordable injuries and only 14.3% of reported sprain strain injuries are recordable.



Mom's Meals Fulfillment Center – Ankeny, IA

Engineering Control – Cardboard Baler



The Mom's Meals team designed and installed a way to move empty cardboard from production to a cardboard baler.



an **nsc** chapter

Facilities Management Safety Committee – Custom Outlet Covers

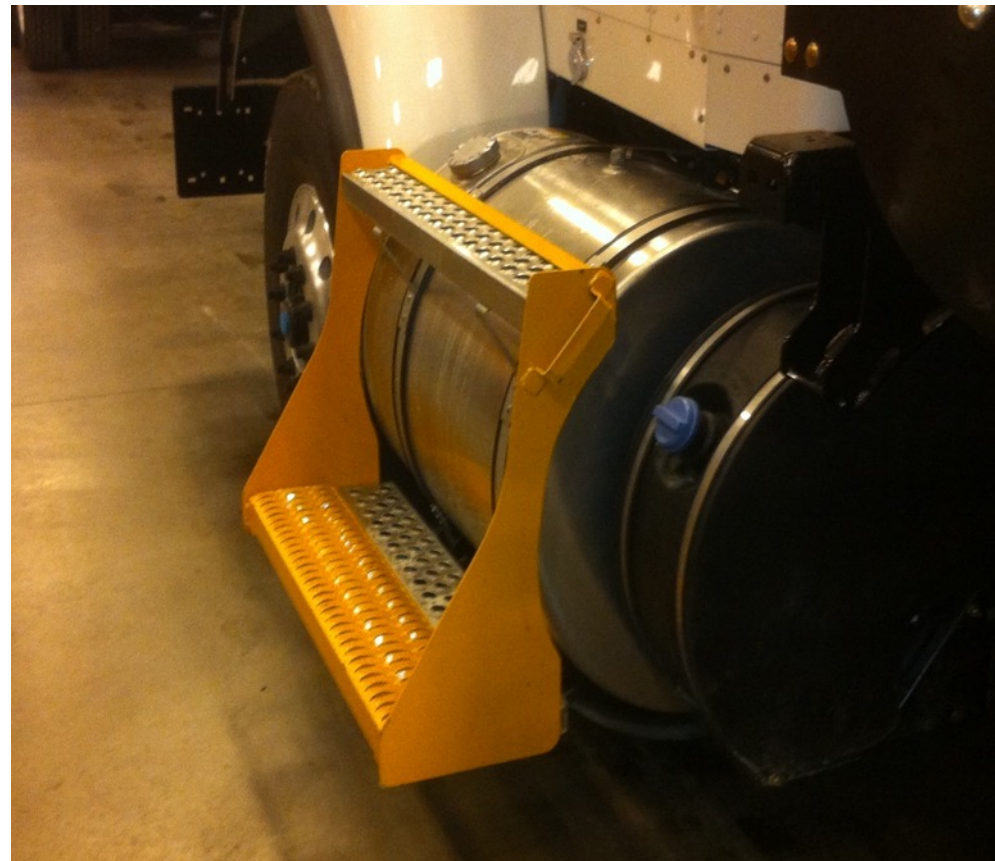


UNI's Facilities Management Safety Committee worked to resolve a safety concern related to electrical arcing that was occurring in the metal work space around outlet stations. After equipment was plugged into the electrical outlets, it was discovered that if the plugs became loose and left a small gap between the plug and electrical outlets, fine metal particles would rest on the prongs of the plug. When the plug was corrected by pushing it farther into the outlet the fine metal particles resting on the plug would then create the electrical arcing issue. To help resolve this safety concern custom made outlet covers were made by the carpenter shop that would help keep out the fine metal particles that would gather on top of the plug to stop the electrical arcing from occurring.



VACTOR MANUFACTURING – STREATOR, IL

Temporary Step



The steps on the driver's side of a truck are not off set, making it difficult to find lower step. By attaching the temporary step, a fall hazard was eliminated



an **nsc** chapter