

Having trouble viewing this email? [Click here](#)



## In This Issue

[Upcoming IISC Events](#)

[Message From the Executive Director](#)

[IISC Networking Breakfast - November 11, 2014](#)

[From the Desk of the IISC Training Department](#)

[Environmental: EPA Adds Nonylphenol Category for TRI Reporting](#)

[Roadway Safety: Pedestrian Safety & Teens](#)

[OSHA Extends Compliance Date for Crane Operator Certification Requirements](#)

[IISC's Online Streaming Audiovisual Library](#)

[New Members](#)

## Quick Links

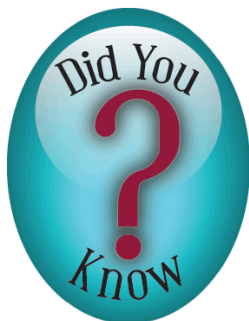
[IISC Website](#)

[Membership Info](#)

[Calendar of Events](#)

[IISC's Online Streaming Audiovisual Library](#)

## Did You Know?



IISC's 62nd Annual  
Professional Development

November 2014 - Vol. 19 - Issue 11



## Message From the Executive Director

### YOU Have the Ability to Acknowledge YOUR Organization's Excellence in Safety

The Hazard Control Recognition Award, the President's Award, and the Community Enrichment Award applications submission date is NOW OPEN. The awards applications submission date opened on November 1st and remains open through January 31, 2015.



It is time to take full advantage of YOUR Iowa-Illinois Safety Council MEMBER ONLY Safety Awards Program. IISC member organizations are provided with an exceptional safety awards program to recognize SAFETY-MINDED organizations and the people responsible for delivering on SAFETY everyday.

The Hazard Control Recognition Award and the President's Award both offer an excellent avenue to encourage employees in their efforts with reducing hazards in the workplace. In addition, the Community Enrichment Award recognizes one member organization for outstanding efforts within the community in the areas of safety, health, and environmental projects. All Community Enrichment Award applicants are recognized and one member company will receive the Community Enrichment Award.

Please review the information at [www.iisc.org](http://www.iisc.org) to see how to apply for these first rate awards that will bring recognition to your company and encourage continuous safe practices. Or you can contact Logan Vaughan at [logan@iisc.org](mailto:logan@iisc.org) and additional staff ([laura@iisc.org](mailto:laura@iisc.org) or [nancy@iisc.org](mailto:nancy@iisc.org)) to help you with any questions and your application submissions.

Thank you for your continued support in keeping workplaces, roadways, homes and communities, healthy and safe!

*Laura Johnson, CAE  
Executive Director  
Iowa-Illinois Safety Council*

Conference & Expo is  
April 22-24, 2015 in  
Dubuque, Iowa.

The [PDC](#) agenda  
and registration will  
be available by the  
end of November.

**Mark your  
calendars today!**

**Iowa-Illinois Safety  
Council Executive  
Sponsors**



## IISC Networking Breakfast - November 11



Please join us for Iowa-Illinois Safety Council's Des Moines area breakfast group. This is a networking opportunity for members to learn about the latest in safety, health, and environmental issues.



### **Special Guest Speaker:**

Gary Higbee, CSP - renowned as IISC's Board President, President & CEO of Higbee & Associates AND Senior Safety Consultant for SAFESTART, the most successful safety training process in the world.

**November 11, 2014 | 7:30 - 9:00 am**  
Courtyard by Marriott Ankeny  
2405 SE Creekview Dr - Ankeny, IA

**Registration: \$25 per person**

[\*\*REGISTER ONLINE\*\*](#)

[Back to top](#)

From the Desk of the IISC Training Department



### **Winter Driving**

It is that time of year when the weather starts changing. As the weather changes, so must our driving habits. Are you ready to drive



[Click here for more information on IISC's Executive Sponsor Program.](#)

### Upcoming IISC Events

November 4-5 (class full):  
[OSHA 10 Hr General Industry Course](#)

November 4-7(class full):  
[OSHA 30 Hr General Industry Course](#)

November 11:  
[Networking Breakfast](#)

November 12:  
[Recordkeeping](#)

November 12:  
[Accident/Incident Investigation & Train-the-Trainer](#)

November 18:  
[Lockout/Tagout & Train-the-Trainer](#)

November 18:  
[Confined Spaces & Train-the-Trainer](#)

November 19:  
[Powered Industrial Truck & Train-the-Trainer](#)

November 19:  
[Aerial Lift Safety & Train-the-Trainer](#)

December 3-5:  
[Instructor Development Course - First Aid/CPR/AED](#)

in the first snowfall of the season?

Drive according to the road conditions. Just because the speed limit is 65 doesn't mean you can drive 65. When slowing down, brake gently to avoid skidding. If the wheels lock up, ease off the brakes. Keep your windshields clean and lights on, and do not use cruise control. If your rear wheels skid, turn the front wheels in the direction of the skid.

The best advice for bad winter weather is to not drive at all. Here are a few tips to help you have a safe commute on our roadways during the winter season.

The first thing to do is to have your vehicle checked out. Start with a checkup that includes:

- Ignition, belts, fluids, hoses and spark plugs
- Battery and distributor
- Tires for air and tread wear
- Antifreeze and full tank of fuel

You should also have an emergency kit in your vehicle that contains essential items such as:

- Shovel and tire chains
- Jumper cables and bag of salt or cat litter
- Tool kit, flashlight, first aid kit
- Ice scraper, blankets, high energy foods, and water

If you become stranded, stay in your vehicle, and wait for help to arrive. To help attract attention, you can light flares. Make sure your exhaust pipe is not blocked, and run the engine for 10 minutes at a time to keep warm.

Please be safe during the winter driving season.

**Article Provided by:**  
**Jim Silvers - Trainer/Consultant**  
**Iowa-Illinois Safety Council**

[Back to top](#)

## Environmental: EPA Adds Nonylphenol Category for TRI Reporting

### Federal News

Are you subject to Toxic Release Inventory (TRI) reporting? Recent EPA rulemaking may impact the applicability or scope of the TRI reporting program for your facility. As of September 30, 2014, EPA incorporated a nonylphenol category into the list of toxic chemicals subject to the reporting requirements of Section 313 of the Emergency Planning and Community Right-to-Know Act (EPCRA) and Section 6607 of the Pollution Prevention Act (PPA). This ruling will apply to the 2015 TRI reporting cycle (for which reports are due July 1, 2016).

EPCRA Section 313(d) authorizes EPA to add chemicals to the TRI list if the chemical meets any of the listing criteria established by Section 313(d)(2). Recent toxicological studies indicate that numerous species of aquatic organisms are particularly sensitive to the presence of nonylphenol. Even very low concentrations of

December 5:

[First Aid/CPR/AED Bloodborne Pathogens](#)

December 16-19:

[OSHA 511 Course](#)

January 7:

[Powered Industrial Truck & Train-the-Trainer](#)

January 7:

[Crane and Hoist & Train-the-Trainer](#)

January 13-16:

[Principles of Occupational Safety & Health \(POSH\)](#)

Advanced Safety Certificate Course

January 21:

[Defensive Driving 4 Hour Course](#)

January 28:

[Recordkeeping](#)

January 28:

[Accident/Incident Investigations & Train-the-Trainer](#)

nonylphenol resulted in harmful effects to these species, indicating that this category of chemicals is highly toxic for aquatic life. Based on these studies, EPA determined that nonylphenol meets the 'environmental effects criterion' established under EPCRA Section 313(d)(2) and should be added to the TRI list. EPA defined the nonylphenol category to include the following non-persistent, bioaccumulative, and toxic (non-PBT) chemicals:

CAS No.	Chemical Name
104-40-5	4-Nonylphenol
11066-49-2	Isononylphenol
25154-52-3	Nonylphenol
26543-97-5	4-Isononylphenol
84852-15-3	4-Nonylphenol, branched
90481-04-2	Nonylphenol, branched

Nonylphenol is most commonly used in the manufacturing of items such as detergents, emulsifiers, paints, personal care products, and certain plastics. Industries potentially affected by the ruling include, but are not limited to:

- Food manufacturing
- Wood product manufacturing
- Paper manufacturing
- Consumer products manufacturing
- Chemical manufacturing
- Petroleum and coal products manufacturing
- Machinery manufacturing
- Mining
- Solvent recovery

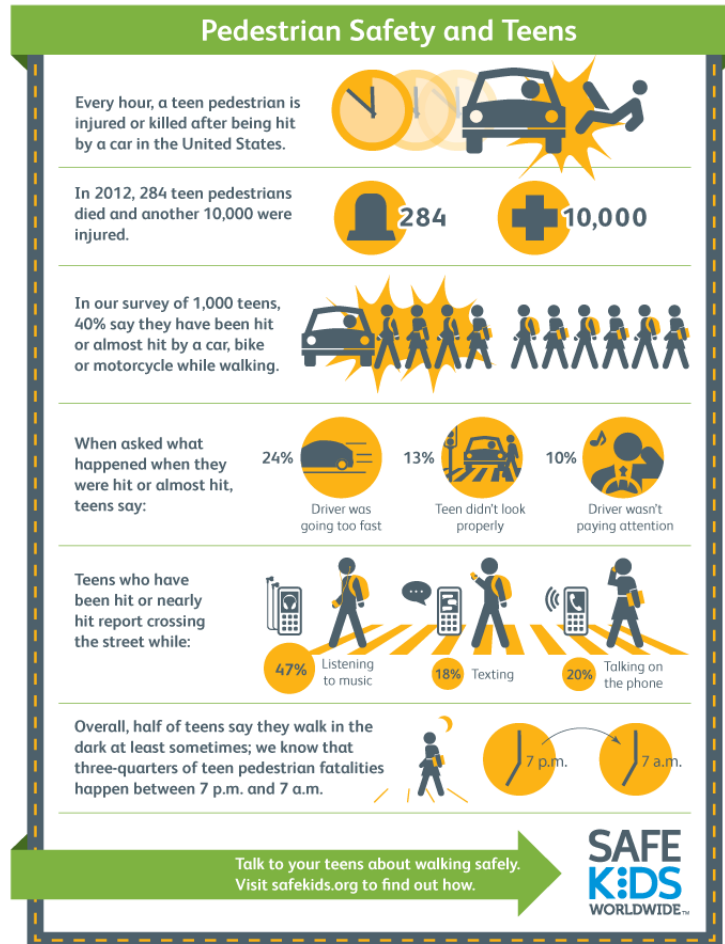
Facilities are required to submit a TRI report to EPA each year if the facility manufactures or processes a TRI chemical in excess of 25,000 pounds per year, or otherwise uses a TRI chemical in excess of 10,000 pounds per year. If you think your facility may be subject to TRI reporting next year due to EPA's recent addition of the nonylphenol category, or if you need to modify your TRI reporting strategy to include nonylphenol, please contact your local Trinity office to explore reporting requirements and possible exemptions. For more information on the ruling, please refer to the Federal Register.

**Article provided by: Eugene Taylor, P.E., C.M  
Principal Consultant - Trinity Consultants, Inc.  
West Burlington, IA**

[Back to top](#)

## Roadway Safety: Pedestrian Safety & Teens

According to a new Safe Kids research report, half of teens surveyed say they cross the street while distracted by a mobile device. Teens who had been hit or nearly hit more frequently reported crossing in the middle of a block or running across the street. The research includes an examination of fatality data that shows 75 percent of teen pedestrian deaths occur between 7 p.m. and 7 a.m., when it's dark out.



To download a PDF version of this infographic, visit <http://www.safekids.org/infographic/pedestrian-safety-and-teens>

Resource: [SafeKids.org](http://SafeKids.org)

[Back to top](#)

## OSHA Extends Compliance Date for Crane Operator Certification Requirements



OSHA has issued a [final rule](#) extending the deadline for crane operator certification requirements in the [Cranes and Derricks in Construction final rule](#) published Aug. 9, 2010 by three years, to Nov. 10, 2017. The rule also extends by three years the employer's responsibility to ensure that crane operators are competent to operate a crane safely. The final rule becomes effective Nov. 9, 2014. During the three-year period, OSHA will address operator qualification requirements for the cranes standards including the role of operator certification. The final cranes and derricks rule required crane operators on construction sites to meet one of four qualification/certification options by Nov. 10, 2014. After publishing the final rule, a number of parties raised concerns about the standard's requirement to certify operators by type and capacity of crane and questioned whether crane operator certification was sufficient for determining whether an operator could operate their equipment safely on a construction site. For more information, see

the [news release](#).

Source: OSHA QuickTakes - October 1, 2014 - Volume 13 - Issue 19

[Back to top](#)

## IISC's Online Streaming Audiovisual Library

Check out this member exclusive service!



### [Injuries Don't Take Holidays](#)

Items #3207 - 19 min

While the holiday season should be a joyous time enjoyed with your family, all too often needless tragedies occur because holiday hazards are ignored. Fire hazards posed by cooking, candles, Christmas trees and careless smoking are frequently neglected. People often forget about the dangers of driving in wintry conditions or under the influence of alcohol during this time of year. In this video, EMT/Firefighter/Best-Selling Author Martin Lesperance discusses the safety precautions people must take to prevent injuries and deaths during the winter holidays. Martin also recalls real stories of emergencies he has attended to make the point that injuries don't take holidays.

Make sure you have signed up with an account via the [Member's Only Page](#) to get the IISC rental rate!

**Not familiar with IISC's audiovisual streaming library?**

[Click here for complete details.](#)

[Back to top](#)

## New Members

**Acciona Windpower,  
North America**  
West Branch, Iowa  
Renewable Energy

**DPT Service**  
Urbandale, Iowa  
Manufacturing Rep for data  
technology management

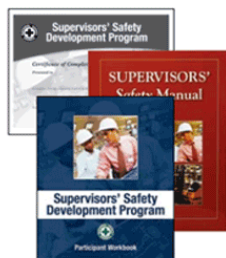
**Midwest Meter MID:COM**  
Hampton, Iowa  
Manufacturing and sales of  
computer products

[Back to top](#)

## Supervisors' Safety Development



Facilitator Kit



Participant Kit

## Program - Participant and Facilitator Kits

Are you interested in providing a comprehensive safety curriculum specially designed to turn both new and experienced supervisors and managers into effective safety leaders and couldn't fit IISC's Train-the-Trainer SSDP instructor-led class being held this week into your busy schedule?

No problem! You can order this turnkey safety training package to use the step-by-step materials and begin training supervisors and managers immediately.

Remember - you can always call on IISC trainers for any additional tips when you begin this interactive Supervisors' Safety Development Program training for your supervisors and managers. Email [Jim@iisc.org](mailto:Jim@iisc.org) or [bryan@iisc.org](mailto:bryan@iisc.org).

### Participant Kit:

**Member: \$110.00 / Not-yet-a-member: \$145.00**

#### Includes:

- Participant Guide covering all 16 module topics
- Certificate of completion
- Supervisors' Safety Manual, 10th Edition

### Facilitator Kit:

**Member: \$325.00 / Not-yet-a-member: \$425.00**

#### Includes:

- Facilitator Guide covering all 16 modules
- Facilitator PowerPoint® presentations with embedded videos on DVD and CD
- Exams for individual modules
- Cumulative course exam
- Supervisors' Safety Manual, 10th Edition

*For more information or to order, contact Logan at 800-568-2495 or 515-276-4724 ext 225 or via email [logan@iisc.org](mailto:logan@iisc.org).*

Iowa-Illinois Safety Council | 6200 Aurora Ave, Suite 604W - Urbandale, IA  
ph. 515-276-4724 / 800-568-2495 | fax 515-276-8038 | [www.iisc.org](http://www.iisc.org)

### [Forward this email](#)



This email was sent to [dawn@iisc.org](mailto:dawn@iisc.org) by [dawn@iisc.org](mailto:dawn@iisc.org) |  
[Update Profile/Email Address](#) | Rapid removal with [SafeUnsubscribe™](#) | [Privacy Policy](#).



Iowa-Illinois Safety Council | 6200 Aurora Avenue, Suite 604W | Urbandale | IA | 50322