



Iowa-Illinois Safety Council Hazard Control Safety Award Program

PRESIDENT'S CHOICE GOLD AWARD RECIPIENTS

ABBOTT LABORATORIES – ABBOTT PARK, IL

Before



After



Electronic Safe Work Authorization

Abbott replaced its paper safe work authorization permit with a computer-based system in 2013. The system drastically improved safety and operational processes associated with hazard control during Hot Work, Confined Space, Line Breaking & Surface Penetration activities. The system “hard-coded” safeguards into the work authorization process. Hazard control benefits included; streamlined safety procedures; job plans reviewed in advance by on-site fire department & rescue services; complete visibility across a large campus of over 7,000 people; Creation of job-specific hazard identification & control plans; and Documentation control for over 10,000 written safe work permits annually.

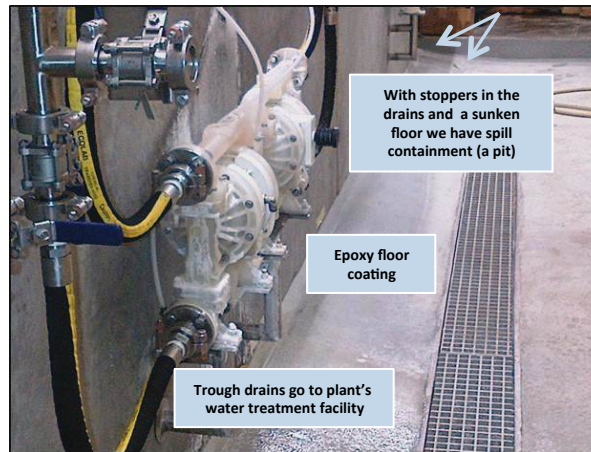
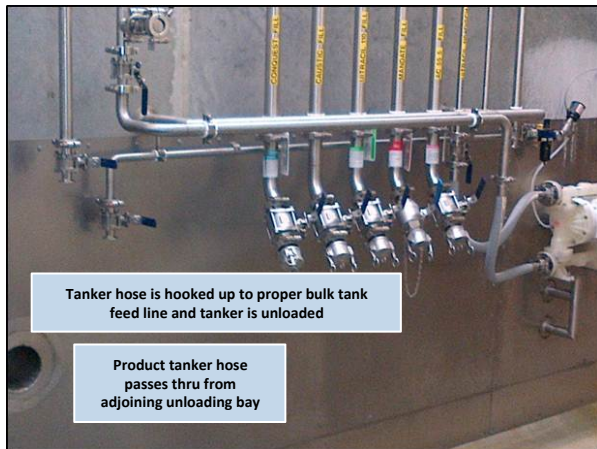
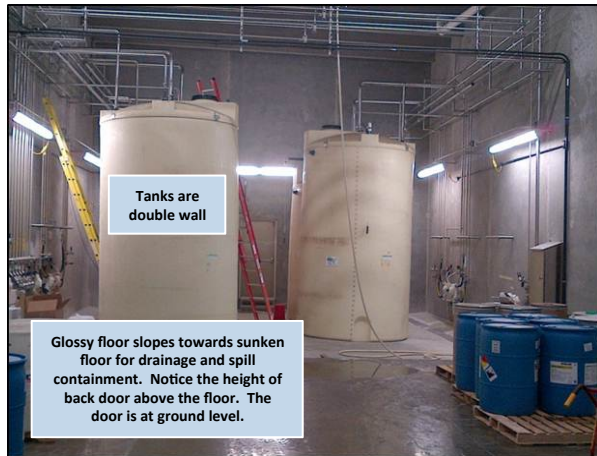


Iowa-Illinois Safety Council



Chapter of National Safety Council
Your Safety & Health Leader

AGROPUR, INC. – HULL, IA



Bulk Chemical Storage

Circumstances: Employees had to transport chemicals to various locations in the plants using 55 gallon drums or smaller containers filled from totes.

Solution: Build a bulk chemical room with a plant wide chemical distribution system.



Agropur Inc., Cheese Plant: Hull, Iowa

Iowa-Illinois Safety Council



Chapter of National Safety Council
Your Safety & Health Leader

AMERICAN PACKAGING CORPORATION - STORY CITY, IA



HAZARD CONTROL: Automated InkFlow Dispensing System

American Packaging Corporation's Flexographic Printing and Laminating Division wanted to find an innovative way to reduce employee exposure to hazards associated with its ink department processes. APC accomplished this goal in 2013 by purchasing an automated InkFlow Dispensing System. The automated ink and solvent dispensing system allowed the APC Ink Department to go from hand dipping in barrels to mix inks to a process that is completed automated. The new equipment has reduced the amount of chemical handling resulting in a reduction of employee exposure to volatile inks and solvents. Automating the ink preparation process has had a positive impact on quality control, waste generation and ergonomics. The new system has a total of 69 head dispensers with the ability to pump from stationary 55 gallon drums and 2200 lbs. totes.

Iowa-Illinois Safety Council



Chapter of National Safety Council
Your Safety & Health Leader

Bonding Device Used to Prevent Fires

Employees had to transfer flammable liquid and needed a bonding device to prevent this dramatization.



The plant electrician created this device – problem solved! (actual photo).

COLONY BRANDS – CLINTON WAREHOUSE - CLINTON, IA



Hazard Identification Program

A Hazard Identification Program was developed in August, in which employees were encouraged to identify, document, and fix hazards in the workplace. Employees who identified hazards that were corrected received rewards for their help in striving for Zero Accidents in our Clinton Warehouse. Since implementation in August, over 450 Hazard ID Cards have been submitted, documented, and received follow up.



Iowa-Illinois Safety Council



Chapter of National Safety Council
Your Safety & Health Leader

DONALDSON COMPANY, INC. - DIXON, IL

Maintenance Area Training Matrix

- Concerns with not knowing who was authorized to use equipment located in maintenance area
- Created training matrix for easy visibility
- Ratings 2 and below need supervision
- Rating 4 is a trainer
- Rating for each individual determined by Maintenance Supervisor
- Employees now know who is authorized to use equipment and who still needs training.
- Matrix used in other areas for Quality and training purposes too.

Equipment

Employee Name Listed on Side

	5034 Arbor Press	5034 Band Saw	5034 Belt Sander	5034 Cut-Off Saw	5034 Drill Press
Employee Name					
Y,	3	3	3	3	3
	3	3	3	3	3
ORN,	0	0	3	0	0
, IVAN	0	3	3	3	3
AN	0	0	0	0	0
RANK	0	3	0	0	0
CK	3	3	3	3	3
	0	0	0	0	0
RIC	3	3	3	3	3
alt,	3	3	3	3	3
	4	4	4	4	4
JESSE	3	3	3	3	3
	3	3	3	3	3
	0	3	3	0	0
ON,	0	3	3	3	3
	3	3	3	3	3
COTT	3	3	3	3	3

Iowa-Illinois Safety Council



Chapter of National Safety Council
Your Safety & Health Leader

JOHN DEERE DAVENPORT WORKS - DAVENPORT, IA

Tack Welding of Articulated Dump Truck Frame

Before Welding fixture was located on the floor causing the operator to weld in many awkward positions for an extended amount of time. Welding in these positions also caused quality issues.



After The fixture was mounted onto synchronized powered lift tables that allows the fixture to be raised and rotated to different heights and positions allowing the welder to work in proper ergonomic positions.



Iowa-Illinois Safety Council



Chapter of National Safety Council
Your Safety & Health Leader

JOHN DEERE HARVESTER WORKS - EAST MOLINE, IL

Before



After



Different level fall hazard

Before:

During final assembly, employees were required to access the top of each combine and exposed to a potential different level fall of 11 feet.

After:

The fall prevention structures were designed and installed to provide protection against this fall hazard.

RPN Scoring Criteria

	Severity	Exposure	Vulnerability	RPN
Pre Assessment	6	4	3	72
Post Assessment	2	4	1	8

Iowa-Illinois Safety Council



Chapter of National Safety Council
Your Safety & Health Leader

PELLA CORPORATION - CARROLL OPERATIONS – CARROLL, IA



Carroll Noise Reduction Project

Machine / Area: Vent Casement
Extrusion Saw / Extrusion Cell

Before Readings

Date: 7-17-13

Conducted By: Carroll Noise Reduction Team

Area Reading (Feeding Material but not Cutting) 92 db

Area Reading (Saw Cycle) 101 db



Description of Issue and Change: Clam shell added to contain sound that is emitted from the extrusion while it is being cut.

After Readings

Date: 1-18-13

Conducted By: Carroll Noise Reduction Team

Area Reading (Feeding Material but not Cutting) 84 db

Area Reading (Saw Cycle) 91 db



Operator Comment: It is unbelievable the reduction in noise for this process who would have known that muffling the noise from the metal would make such a huge difference.

Iowa-Illinois Safety Council



Chapter of National Safety Council
Your Safety & Health Leader

POET BIOREFINING – CORNING, IA

Grains Building: Dusty DDG Loadout

- Dusty conditions during DDG Product load out.
(NO BEFORE PICTURE AVAILABLE)
- Installed a collapsible chute, designed by *Redwing*, that expands and contracts to allow product through, greatly reducing the amount of dust created during the load out process

After



Iowa-Illinois Safety Council

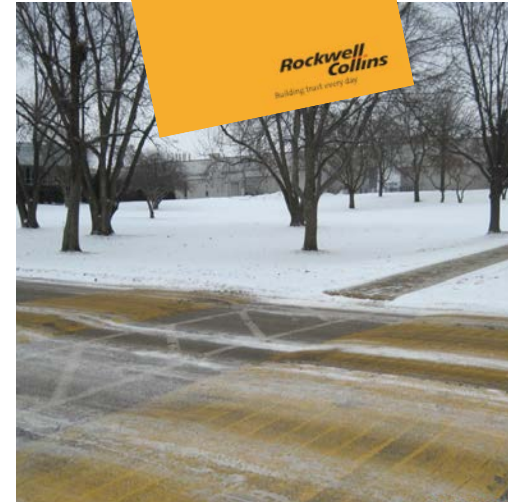


Chapter of National Safety Council
Your Safety & Health Leader

ROCKWELL COLLINS – CEDAR RAPIDS, IA

Parking Lot Safety Improvement and Awareness

- Parking Lot Safety Hazards (90 acres of parking lots, 5 miles of sidewalks, 5 miles of drives) Were Controlled Through the Following:
 - Speed Calming Humps
 - Replacement of Damaged Sidewalks
 - Resurfacing of Parking Lots
 - (FS input – heated sidewalks, snow/ice management, etc.)
 - Winter Weather Awareness Campaign
 - Shuttle Bus Between Buildings
 - Traffic Signal Improvements for Pedestrians



Iowa-Illinois Safety Council



Chapter of National Safety Council
Your Safety & Health Leader

ROQUETTE AMERICA, INC. – GURNEE, IL

Packaging Improvements

A new packaging line was installed which consisted of many manual tasks. These were lifting 50 pound paper bags, bending to place bags on pallets and stretch wrapping pallets. There were concerns of major back injuries if not rectified.



Manual bag stacking



Manual stretch wrap



Pallet lift and vacuum bag lift



Automatic Stretch Wrapper

A JSA was performed which assessed different equipment/ergonomic changes that could be used to eliminate bending and lifting issues. The solutions:

- pallet lift to raise the pallet so deep bending was eliminated.
- Automated stretch wrapper to eliminate manual wrapping (bending hazard)
- Vacuum lift to pick up bags and place them on the pallets to eliminate heavy lifting
- Ergonomics training to reinforce the best lifting and bending techniques.

Iowa-Illinois Safety Council



Chapter of National Safety Council
Your Safety & Health Leader

VAN GORP CORPORATION – PELLA, IA



Rubber Machining Improvement

Pictured here is a pulley that is getting the rubber machined down to size in a CNC lathe. Unlike metal that chips away when you machine it, rubber tends to machine off in strands and can build up. If not watched closely it can build up quickly and cause damage to the part and equipment.

Solution: We introduced an air stream in front of the cutting knife that blows the rubber toward the tailstock of the lathe that forces the rubber to pile up in the bottom of the lathe rather than near the cutting area. (I apologize for not being able to provide a picture of the new setup, this process is not run very often).

Iowa-Illinois Safety Council



Chapter of National Safety Council
Your Safety & Health Leader



INFORMATION FOR THE 2015
AWARDS APPLICATION WILL BE
AVAILABLE IN THE FALL OF 2014.

Iowa-Illinois Safety Council



Chapter of National Safety Council
Your Safety & Health Leader